

Features

- Frequency Range: 20~500MHz
- Standard Hermetic Package
- Operating Temperature Range: -55°C ~ +85°C

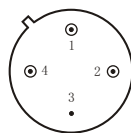
Specifications (50 Ω, V_{CC} = +5V, T_A = -55°C ~ +85°C)

Parameter	Symbol	Unit	Guaranteed	Typical
Frequency Range	f _L ~f _H	MHz	20~500	20~500
Gain	G _p	dB	≥10.0	10.5
Gain Flatness	ΔG _p	dB	≤1.0	0.5
Noise Figure	F _n	dB	≤2.5 Δ	2.0
Input VSWR	VSWR _i	—	≤2.0:1 Δ	1.5:1
Output VSWR	VSWR _o	—	≤2.0:1 Δ	1.8:1
Output Power @ 1dB Compression	P ₋₁	dBm	≥7.0 * Δ	7.5
DC Current	I _{CC}	mA	—	17

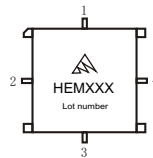
“*”f = 400MHz; “Δ” T_A = 25 ± 1°C;

Maximum Rating

DC Voltage : +8VDC
 RF Input: +10dBm
 Storage Temperature: +125°C



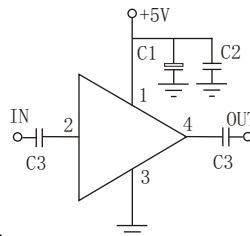
T0-8C



SMO-8C

Application Notes

1. Typical application shown as right, C₁ = 3.3~22 μF ; C₂ = 3300~6800pF ; C₃ = 1000pF;
2. See assembly section for mounting information
3. Connectorized package(SMA-1) available



Typical Curves

